



PROFILE  
THEATRE



**BURIED CHILD**  
BY SAM SHEPARD

[ MAY 29 – JUNE 15, 2014 ]

# BURIED CHILD

By Sam Shepard

Directed by Adriana Baer

## CAST

Dodge.....	Tobias Andersen*
Halie .....	Jane Fellows
Tilden .....	Tim Blough*
Vince .....	Ty Hewitt*
Shelly .....	Foss Curtis
Bradley .....	Garland Lyons
Father Dewis .....	David Bodin

PLACE AND TIME: ILLINOIS, 1978

## DESIGNERS & PRODUCTION

Scenic Design .....	Alan E. Schwanke
Costume Design.....	Jessica Bobillot
Lighting Design.....	Kristeen Willis Crosser
Sound Design.....	Sharath Patel
Properties Design .....	Kaye Blankenship
Production Manager .....	Thyra Hartshorn
Technical Director .....	Phil Shaw
Stage Manager.....	D Westerholm*
Stage Management Apprentice.....	Bailey Maxwell
Production Management Apprentice .....	Olivia Murphy
Board Operations .....	Jenn Lindell
Master Electrician.....	Alexz Eccels
Wardrobe.....	Sara Ludeman
Directing Apprentice.....	Cambria Herrera
Sign interpretation for June 5 performance.....	Dot Hearn
	Rich Hall

## SPECIAL THANKS

Artists Repertory Theatre, Misty Tompoles, Reed College, Lewis and Clark College, Rebuilding Center, La Bonita, Switch Unique Shoes and Clothing, Cheryl's on 12th, Michael Streeter, Hope Alexander

THIS PRODUCTION RUNS APPROXIMATELY 2 HOURS WITH ONE 10-MINUTE INTERMISSION

\*Member of Actors' Equity Association



## BURIED CHILD IS SPONSORED BY

FRANCIE AND PAUL DUDEN

## THIS SEASON IS FUNDED IN PART BY



---

## FROM THE DIRECTOR

The old adage “you can’t go home again” may never be truer than it is in this deeply challenging and mysterious piece of writing with which Sam Shepard has let us play. This is the story of trying, though – of trying to find our place in the world, of seeking connections that we felt as a child, of longing for the security of knowing who we are and how we fit in because we’re with family. But what happens when that connection is missing? What happens when what we are sure we remember just doesn’t fit anymore? What happens to our bodies when we forcefully block tragic memories? What is true?

Directors’ notes often talk about the universality of a play and reassure the audience that the play they’re about to see relates to them for myriad reasons. This is a (somewhat misguided) way of making us all feel like we’re spending worthwhile time together. Well, fond readers, I’m not sure you want to directly relate this time around. And to be honest, I don’t think that’s actually why you come to the theatre. I think you’re here because you want to be challenged, to see thought-provoking and stimulating theatrical

---

## STAY WITH US, LEAN IN, JOIN US IN THE PRESENT MOMENT. ANYTHING CAN HAPPEN.

literature brought to life. You want to leave tonight and talk about the play for the next few days or weeks, to argue with your friends about “what really happened,” to be made to think hard and question everything. And you want to be entertained.

So here’s my offering for you tonight:

We have questioned every moment, every repeated word, every pause, every exchange between characters. By solving some mysteries, we uncovered more. We thought we had it figured out and then it shifted again, morphing right in front of us – just like life, just like memory. Tonight we tell this story as truthfully as we can. Tomorrow we will do the same. But your presence here, in this moment, will change the energy in the room. You may hear a line tonight said with more emphasis than its ever been said before, and that might unlock the mystery for you. Stay with us, lean in, join us in the present moment. Anything can happen.

- Adriana Baer

---

## ABOUT SAM SHEPARD

Sam Shepard was born in 1943 in Fort Sheridan, Illinois. He worked as a farmhand and musician before moving to New York to begin his career as a playwright. At the start of his career, Mr. Shepard spent several seasons with La MaMa and Caffe Cino in New York and as playwright-in-residence at the Magic Theatre in San Francisco. In 1979, he was awarded the Pulitzer Prize for Drama for

*Buried Child*. His screenplay for *Paris, Texas* won the Golden Palm Award at the 1984 Cannes Film Festival. In 1986, he was elected to the American Academy of Arts and Letters, and in 1992 he received their Gold Medal for Drama. Of his 59 plays, 11 have won Obie Awards. Mr. Shepard is also a director and accomplished film actor.

---

## ABOUT PROFILE THEATRE

Profile’s mission is to produce a season of plays devoted to a single playwright, engaging with our community to explore that writer’s vision and influence on theatre and the world at large. Founded in 1997 by Jane Unger, Profile is nationally-recognized for engaging audiences to have a deep experience with a writer’s work by presenting productions of exemplary artistic merit and quality.

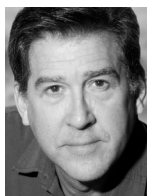




## TOBIAS ANDERSEN [DODGE]

For Profile, he has appeared as Ulysses S. Grant in *A Few Stout Individuals*, Will Kidder in *The Young Man From Atlanta*, Charlie in

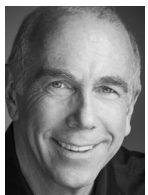
Seascape, Jim in *Tales of the Lost Formicans* and Ray/Anson in *Thief River*. Portland appearances include *Snow Falling On Cedars* and *Sometimes A Great Notion* (PCS), *The Seafarer* and *Vanya* (ART), *The Tempest* and *Waiting for Godot* (Clackamas Rep), *On Golden Pond* and *The Man Who Came To Dinner* (Lakewood), *Hamlet* (Post 5) and "Salter" in the American premiere of *A Number* (Imago). He recently appeared in *The Illustrated Bradbury*, a one-man play coauthored with Ray Bradbury and slated for publication in 2014. He was last seen on *Grimm* as a Catholic priest having a difficult time exorcising a demon.



## TIM BLOUGH [TILDEN]

Tim is a proud member of Actors' Equity and has been acting professionally for over twenty-five years. He has more than sixty plays, plus numerous film, commercial

and TV credits, including TNT's *Leverage* and NBC's *Grimm*. He has appeared on stages in California, Florida, Texas and Virginia. Favorite roles include; Lopakhin in *The Cherry Orchard*, Bolingbroke in *Richard II*, Starbuck in *The Rainmaker*, George in *Of Mice And Men*, and Finbar in *The Weir*. He is thrilled to be a part of *Buried Child*, working with an amazing director, cast and crew.



## DAVID BODIN [FATHER DEWIS]

Dave appeared last season in *The Road to Mecca* (supporting actor Drammy award) and in several earlier Profile shows: *The Homecoming*, *A Kind of Alaska*, *Six Degrees of*

*Separation* among them. He has been part of many Portland productions over the years,

most recently in *One Flea Spare* at Shaking the Tree and *Noises Off* at Third Rail. He has been seen on *Grimm*, *Leverage*, *Nowhere Man*, and some independent films: *Bucksville*, *Shiver*, and others.



## FOSS CURTIS [SHELLY]

Foss is thrilled and honored to be making her Profile Theatre debut with this incredible production.

Foss most recently played Deanna in Artist Repertory

Theatre's *XMAS UNPLUGGED*; *The Reason for the Season*. Other Portland credits include Bianca in Portland Shakespeare Project's *The Taming of the Shrew*, and Silvia in *Two Gentlemen of Verona* with Playmakers at Disjecta. Classically trained in London at the British American Dramatic Academy, Foss received her undergraduate degree from Sarah Lawrence College. Film credits include: *Waiting*, *The Descent of Walter McFea*, and *Tahoe*.



## JANE FELLOWS [HALIE]

Jane returns to Profile's stage, having appeared in *The Trip To Bountiful*, *The Carpetbaggers's Children*, *Jake's Women*, *A Few Stout Individuals*, *Lake Hollywood*, and *Prisoner of*

*2nd Ave*. She has been featured at CoHo Theatre in *The Outgoing Tide*, at Lakewood in *On Golden Pond*, at Artists Rep in *Sherlock Holmes and the Case of the Christmas Carol*, with Theatre Vertigo in *Dead Man's Cell Phone*, *Cloud 9*, and *The Adding Machine*, and at defunkt in *The Children's Hour*.

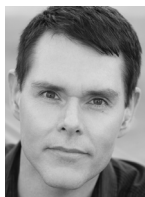


## TY HEWITT [VINCE]

Born and raised in Ketchikan, Alaska, Ty is proud to make his Profile debut in the Sam Shepard Season. He will also be part of Profile's upcoming Festival of One Acts. Ty has appeared locally in *The Scene* at Portland

## BIOGRAPHIES CONTINUED

Playhouse and *On The Table* with Sojourn Theatre. Ty performed in *deCOMPOSITION*, which he co-wrote, in Seattle and NYC. New York credits include *Opus D'Amour* at Theatre Lab, *Babel Tower* with Round Table Ensemble, and as Orsino in Aquila Theatre's *Twelfth Night* at Lincoln Center. He has worked nationally at Provincetown Theatre (Cape Cod), Coterie Theatre (Kansas City), Kentucky Shakespeare Festival (Louisville). Ty has a BFA from Southern Oregon University and an MFA from UMKC.



### **GARLAND LYONS [BRADLEY]**

*Buried Child* marks Garland's return to Profile after a 6-year hiatus. He most recently appeared as Tartuffe with Post5 Theatre. Additional local theatrical credits include

Portland Center Stage, Artist Rep, Defunkt, Theatre Vertigo, NW Classical, Stark Raving, Public House Theatre Co., NW Children's Theatre and Quintessence. In 2010, Garland earned a Drammy for his role as The Judge in Theatre Vertigo's *Romance*. Favorite roles include Bottom in *A Midsummer Night's Dream* and Aaronow in *Glengarry Glen Ross*. Film/TV credits include: *Grimm*, *Portlandia*, *Leverage*, *Emeril*, *The Falls*, and *Restless*. Garland holds degrees in Theatre and Psychology from the University of Washington.

### **ADRIANA BAER [DIRECTOR]**

Adriana is the Artistic Director of Profile Theatre where she previously directed *The Road to Mecca* and *My Children! My Africa!* by Athol Fugard. New York directing credits include *Romeo and Juliet*, *A Streetcar Named Desire*, *The Seagull*, *The Hairy Ape* (Columbia Stages), and work at Atlantic Theater Company Acting School, the cell, and The Acting Company. Other directing credits include *Woyzeck* (Bay Area Critics Circle Award for Best Direction), *The Maids*, and *No Exit* at The Cutting Ball Theater (San Francisco) where she was the

Associate Artistic Director during the 2004-2007 seasons. BA: Sarah Lawrence College. MFA in Directing: Columbia University.

### **ALAN E. SCHWANKE [SCENIC DESIGN]**

Recent design credits include *The Conference of the Birds* (Willamette University), *The Government Inspector* (Western Oregon University) and *Jitney* (Portland Playhouse). Favorite regional design credits include Shakespeare's *Amazing Cymbeline* (Portland Center Stage), *Wonka the Musical* (Chicago Shakespeare) and *Knute Rockne: All American* (Theatre at the Center). In addition to being the Resident Design Assistant for the Oregon Shakespeare Festival, Alan works extensively within the Portland Theatre Community where he has collaborated with such theatres as Profile Theatre, Artists Rep, Portland Playhouse, Third Rail Rep and CoHo Theatre. Alan received his MFA in Scenic Design from Northwestern University in Chicago.

### **JESSICA BOBILLOT [COSTUME DESIGN]**

Past work for Profile Theatre includes *The Road to Mecca*, *Eyes for Consuela* and *5<sup>th</sup> of July*. Other productions in the rose city: *One Flew Spair*, *Seven Guitars*, *The Big Meal*, *XMAS UNPLUGGED*, *Opus 3*, *A Bright Room Called Day* and *Lear's Follies*. Costumes for PSU music department: Britten's *Midsummer's Night Dream* and Puccini's opera *La Rondine*. Working at Portland Opera Association, assistant costume designer on *La Callisto* and *L'Enfant et les Sortilèges*. Ms. Bobillot says "Bravo!" to all of the artists at Profile.

### **KRISTEEN WILLIS CROSSER [LIGHTING DESIGN]**

Kristeen received degrees from Centre College and Wayne State University. Previously she designed scenery and/or lighting for several Profile productions including *My Children! My Africa!* and *The Road to Mecca*. She has designed scenery and/or lighting for several area theatres including Artists Rep's *The Monster Builder*, *Foxfinder*,

## BIOGRAPHIES CONTINUED

and *Eurydice*, Northwest Children's Theatre's *Peter Pan* and *Pinocchio*, CoHo Production's *The Outgoing Tide*, Miracle Theatre's *Mariela in the Desert* and Third Rail Repertory Theatre's *A Bright New Boise* and *Gideon's Knot*. She received a 2012 Outstanding Lighting Design Drammy for Miracle Theatre's *Oedipus el Rey* and a 2013 Outstanding Scenic Design Drammy for Profile Theatre's "*Master Harold*"... and the Boys.

### SHARATH PATEL [SOUND DESIGN]

Portland credits include *Eyes for Consuela*, *The Road to Mecca*, *Blood Knot*, *My Children! My Africa!* (Profile Theatre), *The Mother F\*\*ker with the Hat* (Artist's Rep), *The Brother/Sister Plays*, *Jitney* (Portland Playhouse), *Oedipus el Rey* (Miracle Theatre), *A Pigeon and A Boy* (Jewish Theater Collaborative), *Lion in Winter* (Northwest Classical). New York and International credits include designs at The Westside Theater, La MaMa, Playwrights Horizons, Theater Row, PS 122, Columbia, Yale, Harvard, India, France, England. Sharath earned his MFA in Sound Design from the Yale School of Drama. *Binding* at PS 122 won the 2010 Innovative Theatre Award for Outstanding Performance Art Production in New York City.

### KAYE BLANKENSHIP [PROPERTIES DESIGN]

Kaye is a scenic, lighting, and props designer, as well as a member of the producing company String House. She has provided props for many shows in Portland, including: *Fancy Nancy* (Oregon Children's Theatre), *Midsummer* (Third Rail), *Gideon's Knot* (Third Rail), *Charlotte's Web* (Oregon Children's Theatre), *The Road to Mecca* (Profile Theatre), and *Mother Courage* (Theatre Vertigo). Kaye also works as a drafter at PCS and is thrilled to be making a living through the arts.

### THYRA HARTSHORN [PRODUCTION MANAGER]

Thyra is currently a freelance Production Manager, Stage Manager and Technical Director. Her training includes an MFA in

production and design with a concentration in stage management from the University of California, Irvine, as well as almost two decades in ballet production. Thyra has toured and worked with companies around the world including San Francisco Ballet, American Ballet Theatre and the Bolshoi Ballet. Locally she's also worked with Oregon Ballet Theatre, Portland Playhouse, White Bird, Portland Taiko and BoomArts. Thyra is currently teaching theater tech/stagecraft classes at Clackamas High School and Rex Putnam High School.

### OLIVIA MURPHY

#### [PRODUCTION MANAGEMENT APPRENTICE]

Olivia is thrilled to return to Profile Theatre in a new role. She is grateful to have found such a loving theater community in the Pacific Northwest. Before Portland, Olivia spent two summers with Shakespeare Santa Cruz in California and four years stage managing a variety of productions at Bennington College in Vermont. Since moving here, Olivia has worked with Theatre Vertigo, Third Rail Repertory Theatre, Shaking the Tree Theatre, The Playmakers, Portland Shakespeare Project, Oregon Children's Theatre, Artists Repertory Theatre, and the Quick and Dirty Art Project. Olivia is a proud member of Actor's Equity Association.

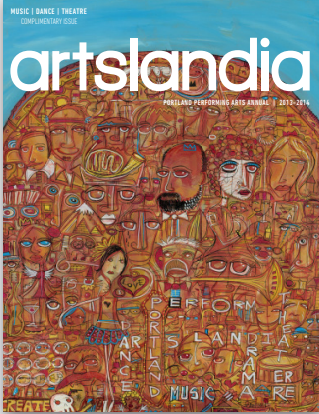
### D WESTERHOLM [STAGE MANAGER]

Portland Stage Management credits: *The Light in the Piazza* (Portland Playhouse, dir. Brian Weaver); *Eyes for Consuela* (Profile Theatre, dir. Mikhael Tara Garver); *The Road to Mecca* (Profile Theatre, dir. Adriana Baer). Oregon Shakespeare Festival, non-equity Assistant Stage Manager: *The Unfortunates* (2013), *A Midsummer Night's Dream* (2013), *Troilus and Cressida* (2012), *The Very Merry Wives of Windsor, Iowa* (2012), *Julius Caesar* (2011), The African Company Presents *Richard III* (2011). BA in Theatre Management from Western Washington University, MFA in Stage Management from Columbia University.

**BAILEY ANNE MAXWELL**  
**[STAGE MANAGEMENT APPRENTICE]**

Bailey Anne Maxwell is absolutely delighted to be returning for her second show with Profile Theatre. Bailey's recent credits include: *Lend Me a Tenor* (Linfield), *Chekhov's The Bear* and *The Proposal* (Linfield), *Dead Man's Cell Phone* (Linfield), *Seven Guitars* (Artists Rep), *The Lost Boy* (Artists Rep), *Ten Chimneys* (Artists Rep), *Taming of The Shrew* (Portland Shakespeare Project), *Tamer Tamed* (Portland Shakespeare Project), *Eyes for Consuela* (Profile), *Foxfinder* (Artists Rep), and *The Motherf\*cker with the Hat* (Artists Rep). She is also a proud member of the EMC program.

**ACTORS' EQUITY ASSOCIATION [AEA]**, founded in 1913, represents more than 49,000 actors and stage managers in the United States. Equity seeks to advance, promote and foster the art of live theatre as an essential component of our society. Equity negotiates wages and working conditions, providing a wide range of benefits, including health and pension plans. AEA is a member of the AFL-CIO, and is affiliated with FIA, an international organization of performing arts unions. The Equity emblem is our mark of excellence. [www.actorsequity.org](http://www.actorsequity.org)



**LOOK**  
**FOR artslandia**  
**ALL AROUND TOWN**  
**& VISIT US ONLINE**  
**ARTSLANDIA.COM**  
**MUSIC DANCE & THEATRE**

**PROFILE THEATRE WAS FOUNDED IN 1997. EACH SEASON, PROFILE THEATRE EXPLORES THE VISION AND PERSPECTIVE OF A SINGLE PLAYWRIGHT.**

**STAFF**

Adriana Baer, Artistic Director  
Matthew Jones, Managing Director  
Lauren Bloom Hanover, Director of Education and Community Engagement  
Paul Jacobs, General Manager  
Aaron Schwartzbord, Marketing Consultant  
D Westerholm, Box Office Manager  
Alyssa Essman, Christie Craft, Ben Newman, Box Office Representatives

**BOARD OF DIRECTORS**

Steve Young, Chair  
Richard Bradspies  
Paul Duden  
Erika George  
Stephen Guntli  
Mayer Schwartz  
Mary Simeone  
Melissa Stewart  
Maryann Yelnosky

**RESOURCE COUNCIL**

Gwyneth Gamble Booth  
Lue Douthit  
Leslie Johnson  
Mike Lindberg  
Patrick Stupek  
George Thorn  
Jane Unger, Founding Artistic Director  
Julie Vigeland  
Priscilla Bernard Wieden

**WEB PROFILETHEATRE.ORG PHONE 503.242.0080 EMAIL INFO@PROFILETHEATRE.ORG**

# THANK YOU TO OUR GENEROUS DONORS

## EXECUTIVE PRODUCERS \$10,000 AND ABOVE

The Collins Foundation  
Francie and Paul Duden  
Fred W. Fields Fund  
of the Oregon  
Community  
Foundation  
The Kinsman  
Foundation  
Ronni Lacroute  
The Meyer Memorial  
Trust  
The James F. and  
Marion L. Miller  
Foundation  
Oregon Cultural Trust  
The Regional Arts  
& Culture Council,  
including support  
from the City of  
Portland and  
Multnomah County  
The Shubert Foundation  
Dan Wieden and  
Priscilla Bernard  
Wieden

## PRODUCERS \$5,000 - \$9,999

The Herbert A.  
Templeton Foundation  
The Jackson  
Foundation  
Aline Brosh McKenna  
PGE Foundation  
Rose E. Tucker  
Charitable Trust  
Work for Art, including  
contributions from  
more than 60  
companies & 1,600  
employees in the  
region  
Wells Fargo

## ASSOCIATE PRODUCERS \$2,500 - \$4,999

All Classical Portland  
Leotta Gordon  
Foundation  
National Endowment  
for the Arts

Oregon Arts  
Commission  
Mary Simeone  
Patrick Stupek+  
Charlie and Darci  
Swindells  
Steve Young and Jane  
Fellows

## PRODUCING PARTNERS \$1,000 - \$2,499

Michael Bloom and  
Audrey Zavell  
Richard Bradspies  
Dramatists Guild Fund  
Rich and Erika George+  
Melissa and Robert  
Good  
Susan Hoffman  
Leslie Johnson  
Leslie Labbe  
Susan and Leonard  
Magazine  
Norma Reich  
Mary Rosenberg  
Mayer and Janet  
Schwartz  
Susan and John Spring  
Kathleen and Leigh  
Stephenson-Kuhn  
Tom and Linda Unger  
Wieden+Kennedy

## PARTNERS \$500 - \$999

Anonymous  
Barbara Elizabeth  
Bolles  
Dr. Sonia Buist  
Lynn Campbell  
Vince and Valri  
Chiappetta  
Bob and Janet Conklin  
Christy Eugenis  
Robert Geddes  
Richard L Hay  
Judith Henderson  
Alan Jones  
Mary McGlone and Ian  
Underwood  
Patricia Raley  
Judith L Rice  
Halle and Rick Sadle  
Rosalie and Ed Tank

JT Taylor and Barbara  
West  
Ben and Elaine Whiteley

## ASSOCIATES \$100 - \$499

Anonymous  
Kay Abramowitz  
Kregg Arntson and Ted  
Fettig  
John and Debra Bakum  
Ann Bardacke and  
David Wolf  
Arlena Barnes and  
William Kinsey  
Catherine Bax and Ann  
Turner  
Dick and Renee Binns  
Jim and Karen Brunke  
Jim Brunke Real Estate  
Colleen Cain and Philip  
Miller  
Bruce Carroll  
Cheryl Chevis and  
Edwin Gerow+  
Amy Claussen  
Kristen Connor  
John and Joyce Cornyn  
John and Ruth Davis  
Wolfgang Dempke and  
Alise Rubin  
Eileen DeSandre  
Jess Dishman  
Thomas G. Dunne  
Jim Durham  
Carol Edelman  
Carmen Egido and Abel  
Weinrib  
Carl Faber  
Miriam Feder  
Williamson and Edith  
Fuller  
David and Martha  
Gardner  
Maria E Gonzalez+  
Jeff Gorham  
Bruce and Gwendolyn  
Graff  
Gretta Grimala  
Stephen Guntli and  
Chrisse Rocco  
Missy Vaux Hall  
Ulrich H Hardt  
Mike and Patsy Hester  
Michael Hoeye and  
Martha Banyas  
Don and Lynnette  
Houghton  
Virginia Hubbell  
Cecily Johns  
Alan and Dianne  
Johnson  
Joanne Johnson  
Susan Johnson  
Rich and Jean  
Josephson  
Danielle and Elliott  
Kalan  
D. Kamali  
Beth and Chris Karlin  
Carol and Barry Kast  
The Keeton Corporation  
Barbara Kerr  
Jeffrey and Carol  
Kilmer  
Alan Koch  
Carol Kochenderfer  
Monica Moriarty and  
Bill Kwitman  
La Bonita North  
Penny Lapham  
Mark Larson  
Meg Larson  
Lara Lerner  
Ellen Levy  
Byrne and Peggy Lovell  
Trina and Ken Lundgren  
Billie Marx  
Josie Mendoza and  
Hugh Mackworth  
Miles and Libby Merwin  
Charles Meshul and  
Maureen Ober  
Casey Mills and Carmen  
Calzacorta Mills  
Ed Moersfelder  
Veronica Paracchini  
David Parker and Annie  
Popkin  
Jim and Sally Petersen  
Phillip H. Peterson  
Sandy Polishuk  
Sarah Emma Quinn  
Betty and Jacob Reiss  
Brad Rence  
Charles and Judith  
Rooks  
Howard Rosenbaum  
Kirsten Roth  
Cara Rozell

+ Work for Art Participants: These patrons direct their support to Profile Theatre through the Work for Art Program within the Regional Arts & Culture Council.



Charlotte Rubin  
 Rich and Joan Rubin  
 Darrell Salk and Tricia  
 Knoll  
 Shirley Salzman  
 Adam Schwartz  
 Carolyn and Ourry  
 Schwartzbord  
 Peter and Jeanette  
 Scott  
 David and Frances  
 Sessions  
 Gilbert Shaw  
 In Honor of Mary  
 Simeone by Ken  
 Simeone  
 Connie Smith  
 Melissa Stewart and  
 Donald Merkt  
 Milan and Jean  
 Stoyanov  
 Chris Tanner and Lisa  
 Chickadonz  
 George and Edie Taylor  
 Peter Thacker and Lynn  
 Taylor  
 Margaret Thompson  
 George and Nancy  
 Thorn  
 Marcia Truman  
 Barbara Van Raalte  
 Margaret and Frank van  
 Beuningen  
 David and Julie Verburg  
 Julie and Ted Vigeland  
 Janet F. Warrington  
 Judy Werner  
 Jonah Weston  
 Grey Wolfe and Howard  
 Waskow  
 Kathleen Worley  
 Alan and Janet Zell  
 Karen and Lawrence  
 Zivin

## DONORS UP TO \$100

Anonymous (2)  
 Ted Adams  
 Lindsey Alexander  
 Lily Allen-Hughes  
 Robert Amesse  
 Tobias Andersen  
 Sherry Archer and Bob  
 Grossman  
 James Arnoux  
 Erin Badillo

Adriana Baer and Ryan  
 Durham  
 Matthew Bailey  
 Robert Baker  
 Tiffany Baran  
 Brenda Bartell  
 Thomas Becker and  
 Janice Haaken  
 John Behlmann  
 Marie Bellavia  
 Erwin Boge  
 Kaye Blankenship  
 David and JoAnne  
 Bodin  
 Peter and Janet  
 Bonafede  
 Josephine Brassey  
 Thom Bray  
 Kaliswa Brewster  
 Nita Brueggeman  
 Sandra Bryson  
 David Buttarro  
 Graeme Byrd  
 Elliot Cahn  
 Brooke Fletcher and  
 Mario Calcagno  
 Joanne Cali  
 Philip Callen  
 Ellen Cantwell  
 June Carryl  
 Siobhan Caverly  
 Carol and Sy Chestler  
 Rick Comandich  
 Clarence Coe  
 Susan Cowan  
 Kristeen Crossover  
 Foss Curtis  
 Rebecca Davis  
 Ted de Chatelet  
 Chantal Degroat  
 Sarah DeLong  
 Megan S. Densmore  
 Chad Deverman  
 Sarah Dey Hirshan  
 Julie Diamond  
 Stephen Dobay  
 Donald and Deanne  
 Doorlag  
 Karen Easter  
 Gilbert Feliciano and  
 Brianna Clevenger  
 Barbara Felsinger  
 Carol Ferris  
 Betsy Fippinger  
 Laura Frizzell  
 Teresa J Frakes  
 Marty Fromer

Karen Garber and John  
 Desmarais  
 Dawn-Lyen Gardner  
 Mikhael Tara Garver  
 Carolyn Gassaway  
 Jason Glick  
 Lynn Goldstein  
 Katherine Gosnell  
 Anthony Greiner and  
 Mary Grant  
 Michael Griggs  
 Christina Gullion  
 Lauren Gunderson  
 Brett and Kami  
 Hamilton  
 Thomas Harrington  
 Julie Hastings and Oren  
 Kosansky  
 Dot Hearn  
 David Heath  
 Calvin Hennig  
 Helen Herner  
 Jonathan Horvath  
 Alicia Dhyana House  
 Kimberly Howard  
 Elizabeth Huffman  
 Theri Humes and  
 Matthew Jones  
 Alexis Jacknow  
 Geri and Steve Jacobs  
 Paul Jacobs  
 Nathan Jeffrey  
 Paige Jones  
 Merilee Karr  
 Abbey and Harvey Kletz  
 David Kinder  
 Arthur G. Kirby  
 Ginger Kirby  
 Scott Kirby  
 Allison Klein  
 Teresa Kobenstein  
 Diane Kondrat  
 Susan Korey and  
 Merritt Linn  
 Jennifer Lakey  
 Nicole Lane  
 Jenn Lawson  
 Jennifer Le Blanc  
 Allison and Aaron Lear  
 Gordon Lee and Amie  
 Rose  
 Katherine Lee  
 Fiona Leeds  
 Bob Lemon  
 Bob Lemon  
 Joan Levy  
 Sidne Lewis

Michaela Lipsey  
 Dawn Lisell  
 Eileen Little  
 Mikel Lubrano  
 Sara Ludeman  
 Lyle Tucker  
 Garland Lyons  
 Judith Marks  
 Ty and Brenda Marshall  
 Nancy Matthews  
 Clara and Alan  
 Greisman Mayer  
 Sarah McCauley  
 Jane McDonough  
 Judy McKeever  
 Kathryn McLaughlin  
 Wendy McLennan  
 Michael Mendelson  
 Bill and Nancy Meyer  
 Dana Millican  
 Amy Mueller and  
 Allison Rodman  
 Stephanie Mulligan  
 Barbara Nolan  
 Gary Norman  
 Stormy Norman  
 Lee and Chuck Norris  
 Clare O'Sheeran  
 Tomi Obayashi  
 Carlton Olson  
 Nancy Dobbs Owen  
 Dee Packard  
 Sheila Pastore  
 Michelle Paul  
 Jess Prichard  
 Amy Prosser  
 Matthew Corwin and  
 Brennan Randel  
 Karen Rathje  
 Virginia Reed  
 Deborah Rose Reeves  
 Kristie Reeves  
 Norma Reich  
 Nancy Rilling  
 Amanda Sayle Rinzel  
 Mary Roberts  
 Mary Ann Rodgers  
 Elizabeth Romanski  
 Charles and Miriam  
 Rosenthal  
 William and Susan Sack  
 Salt and Sage  
 Productions  
 Tessa Salzman  
 Monica Santana  
 Tim Stapleton

Curtis Schade and Jacquie  
Siewert-Schade  
Deborah Schaffler  
Donna Schreiner  
Laurie Schroeder  
Alan Schwanke  
Edward and Lorna Schwanke  
Aaron Schwartzbord and  
Michael Weinstein  
Jeremy Schwartzbord  
Jim Scott and Elaine Robin  
Luisa M. Sermol  
JP and Monica Setziol-Phillips  
Alice and Howard Shapiro  
Beppie Shapiro  
Susan Shay  
Devani Scheidler  
Isabel Sheridan  
Lynne Shlom  
Ray Simmons  
Tom Slot  
Karla Mason  
Larry Smith  
Amanda Soden  
Antonio Sonera  
Tamara Sorelli  
Scott Stephens  
Elizabeth and Les Stoessl

Alice and Stephen Stolzberg  
Sharon Streeter  
Larry Teitelbaum  
Gail and Bill Tennant  
Simon Thompson  
Nancy Tolin  
Kristen Tompeck  
Toni Tringolo  
Ethan Turner  
Michele Mariana  
Jane Vogel  
Matt Walsh  
Paul Walsh  
Ginger Walter  
Suzan Wapnick  
Steve and Nancy Wasserman  
Katie Watkins  
Ellen Weeks  
Bonnie Werther  
Mike White  
Claire Willett  
Susan Willis  
Carol Ann Wohlmut and Patrick  
Wohlmut  
Jason Wong  
Susannah Rose Woods  
Byron Yankou  
Kevin Yell

## COMMUNITY PARTNERS

Cheryl's on 12<sup>th</sup>  
La Bonita North

## THE JANE UNGER HANDS ON THEATRE! FUND

Created in honor of founding  
Artistic Director Jane Unger,  
gifts to this fund help to sustain  
Hands on Theatre Program,  
bringing theatre education  
into classrooms throughout  
our community.

Elisabeth and Peter Lyon  
Marion Poliakoff  
Beverly Unger  
Sally Unger  
Tom and Linda Unger

This list acknowledges gifts received between  
May 1, 2013 – May 7, 2014. Profile Theatre  
regrets any errors or omissions. Please contact  
the development department at 503.242.0080  
with any corrections or questions.



## ANNOUNCING A NEW WAY TO GIVE TO PROFILE THEATRE!

Become a sustaining producer by making a monthly gift from your bank account or credit card.

Does your employer match charitable gifts? Many employers in town will make matching gifts in response to their employees gifts. Check with your employer today.

Please contact Managing Director Matthew Jones with any questions you may have about making a donation to profile theatre, [matthew@profiletheatre.org](mailto:matthew@profiletheatre.org) or (503) 242-0080.

## CONNECT WITH US!

 Share your experiences and tag them #myprofile

PROFILETHEATRE



@PROFILETHEATRE

JOIN OUR EMAIL LIST | VISIT [PROFILETHEATRE.ORG](http://PROFILETHEATRE.ORG) AND SIGN-UP TO RECEIVE NEWS, SPECIAL OFFERS, AND INFORMATION ABOUT OUR PRODUCTIONS DIRECTLY TO YOUR INBOX.

# IN DIALOGUE SERIES

In Dialogue is our series of lectures, pre-show talks, post-show discussions, concerts and other supplemental programming that explore our featured writer's world. Profile Theatre is committed to providing our audiences with opportunities to engage with our featured writer in unique and varied ways. Through our In Dialogue programming, we extend the event of a Profile production beyond the bounds of what is onstage, bringing the community together for exciting, provocative and inspiring experiences. All events are free and open to the public unless otherwise noted.

## EVENTS AND PROGRAMS THROUGHOUT *BURIED CHILD*

### FRIDAY, MAY 30<sup>TH</sup> OPENING NIGHT RECEPTION

Opening Night reception following the performance with food provided by Cheryl's on 12th.

### SUNDAY, JUNE 1<sup>ST</sup> MAT CHAT

Join Artistic Director and the director of *Buried Child*, Adriana Baer in a post performance Mat Chat with our Director of Education and Community Engagement, Lauren Bloom Hanover.

### THURSDAY, JUNE 5<sup>TH</sup> DINNER DIALOGUE

Dinner Dialogue with Artistic Director Adriana Baer and actors Foss Curtis and Ty Hewitt (additional tickets required).

### FRIDAY, JUNE 6<sup>TH</sup> LIVE LOCAL MUSIC

Before the performance, enjoy the mellow sounds of Tim Acott and Dan Haley. 6:45pm in our lobby.

### SATURDAY, JUNE 7<sup>TH</sup> DESIGNERS PANEL

Panel discussion with *Buried Child* production team as they discuss their individual design processes as well as the ways in which they have collaborated to create the world of the production. 6:40pm in our lobby.

### SUNDAY, JUNE 8<sup>TH</sup> MAT CHAT

Post-performance Mat Chat with cast members.

### WEDNESDAY, JUNE 11<sup>TH</sup>

#### [PRE-PERFORMANCE] WINE TASTING

Wine tasting with Pairings Portland Wine Shop using *Buried Child* as inspiration for the selections. 6:40 in our lobby. Additional charge.

#### [POST-PERFORMANCE] MIX AND MINGLE

Mix and mingle with cast members in our lobby - with wine!

### THURSDAY, JUNE 12<sup>TH</sup> GET CREATIVE

Before the performance, during intermission and after the play has ended, work with a friend or on your own creating a fun and simple interpretation of Shepard's words, using the fun and kooky supplies provided by Profile.

### FRIDAY, JUNE 13<sup>TH</sup> TAMALE NIGHT IS BACK!

Purchase an authentic taste of Mexico before the performance, by La Bonita Restaurant, right in our lobby!

### SATURDAY, JUNE 14<sup>TH</sup> LECTURE - SHEPARD AND THE AMERICAN DREAM

Karin Magaldi, Director of the School of Theatre and Film at Portland State University, will lead a discussion about Sam Shepard and the American Dream. 6:45pm in our lobby.



Example of a World of the Play Sculpture, using the line "You're no son of mine!"



UP NEXT AT PROFILE

# FESTIVAL OF ONE ACTS

BY SAM SHEPARD

9 SHORT PLAYS AND STORIES//6 ACTORS//6 DIRECTORS//6 BANDS//8 PERFORMANCES



The plays include The War in Heaven | The Curse of the Raven's Black Feather | Hail from Nowhere | Just Space | Rhythm Evanescence, or Shakespeare in the Alley | Savage/Love | Tongues | Cowboys #2

Individual tickets and Festival passes available.

PURCHASE AT [PROFILETHEATRE.ORG](http://PROFILETHEATRE.ORG)  
OR CALL 503.242.0080.

Work for Art supports 100+ vital arts & culture organizations, including **Profile Theatre**.

Give at your workplace, or online at **workforart.org**

“The arts transform  
**PEOPLE,  
FAMILIES,&  
COMMUNITIES.**”



A program of the Regional Arts & Culture Council