



PROFILE  
THEATRE



EYES FOR CONSUELA  
BY SAM SHEPARD

[ JANUARY 16 – FEBRUARY 2, 2014 ]

# EYES FOR CONSUELA

By Sam Shepard

Directed by Mikhael Tara Garver

From the story "The Blue Bouquet" by Octavio Paz

PLACE AND TIME: NOW. MEXICO.

## CAST

Henry ..... Michael Mendelson\*  
Amado..... Andrés Alcalá  
Viejo..... Gilberto Martin Del Campo  
Consuela..... Crystal Ann Muñoz  
Ejekatl..... Edna F. Vazquez

## DESIGNERS & PRODUCTION

Scenic Design ..... Seth Reiser  
Costume Design..... Jessica Bobillot  
Lighting Design..... Carl Faber  
Sound Design ..... Sharath Patel  
Properties Design ..... Sara Ludeman  
Stage Manager..... D Westerholm\*  
Production Manager/Technical Director ..... Brent J. Sullivan  
Assistant Production Manager..... Michelle Jazuk  
Production Apprentice ..... Bailey Anne Maxwell  
Master Electrician ..... Ruth Nardecchia  
Board Operations ..... Will Bailey  
Wardrobe..... Sara Ludeman  
Costume Design Assistant ..... Alanna Hylton  
Stitcher ..... Valerie Brooks  
Additional Crew ..... Matt Bell, James Chandler, Mike Cino,  
Nathan Crosby, Emily Douglas, Nicholas Erickson, Karl Hanover,  
Ty Hewitt, Mason McKenzie, Ben Newman, Ben Serrau-Raskin

## SPECIAL THANKS

Artists Repertory Theatre, Joaquin Lopez, Misty Tompoles, Eric Loebel, Ruby Gates, Jim Hornor, Melissa Baldwin, and Russel Terwelp.

**THIS PRODUCTION RUNS APPROXIMATELY 85 MINUTES WITH NO INTERMISISON**

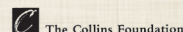
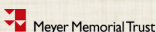
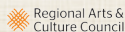
Originally produced by the Manhattan Theatre Club on April 14, 1998.

*Eyes for Consuela* is presented by special arrangement Dramatists Play Service, Inc., New York.

\*Member of Actors' Equity Association



THIS SEASON  
IS FUNDED IN  
PART BY



## FROM THE DIRECTOR

Dear Sam,

It's been a long time, hasn't it? Early in my career, I was taught that your work was the core of contemporary American theatre. While I understood why this was, we didn't always meet eye to eye. We've both grown older now, and one never knows when paths cross. When Adriana asked me to read your play *Eyes for Consuela*, my eyes were opened. I felt like I had finally found you.

Through your writing, you have a direct line to the struggles, passions, and regrets of being an American. In *Eyes for Consuela*, we journey with Henry, an ordinary American man, across the border to Mexico. Throughout the play he is able to see himself more clearly, coming to the revelation of a new American cowboy fantasy: we should live life without regret instead of trying to "start over." But can we live without regret? There are people that stick to us, ghosts that follow us, and memories that haunt us. I believe that every day has the potential to change us, but when we run away, a dark jungle of regret always infiltrates our new life. And without the murky humanness of regret, I wonder if you can ever see the light of love.

---

## ABOUT SAM SHEPARD

Sam Shepard was born in 1943 in Fort Sheridan, Illinois. He worked as a farmhand and musician before moving to New York to begin his career as a playwright. At the start of his career, Mr. Shepard spent several seasons with La MaMa and Caffe Cino in New York and as playwright-in-residence at the Magic Theatre in San Francisco. In 1979, he was awarded the Pulitzer Prize for Drama

## ABOUT PROFILE THEATRE

Profile's mission is to produce a season of plays devoted to a single playwright, engaging with our community to explore that writer's vision and influence on theatre and the world at large. Founded in 1997 by Jane Unger, Profile is nationally-recognized for engaging audiences in an in-depth and meaningful experience with a writer's work by presenting productions of exemplary artistic merit and quality.

“**ONE COULD HEAR  
THE BREATHING OF  
THE NIGHT, FEMININE,  
ENORMOUS.**” From *The Blue Bouquet*  
by Octavio Paz

We have invited our audience into the shadows of Henry's great mysterious jungle. They are our cacophony of questioning spirits. They are our searching eyes.

I hope you get to visit Portland and see what great work Profile is doing. I am proud of this cast, this team, and this theater. So why have I written you this letter? Since I tend to write dedications to the playwright in my director's note, I need to explain why I am not dedicating this production to you. I am so grateful for our meeting this way, but I have to dedicate this production to Profile's new Artistic Director, Adriana Baer. You've surprised and changed me with this play, but as my longtime colleague and friend, even when my vision is murky, it is her light I see beyond the jungle.

I sincerely hope we meet again.

**Mikhael Tara Garver**  
Director

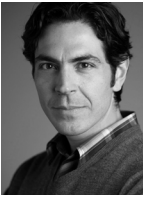
for *Buried Child*. His screenplay for *Paris, Texas* won the Golden Palm Award at the 1984 Cannes Film Festival. In 1986, he was elected to the American Academy of Arts and Letters, and in 1992 he received their Gold Medal for Drama. Of his 57 plays, 11 have won Obie Awards. Mr. Shepard is also a director and accomplished film actor.



### ANDRÉS ALCALÁ [AMADO]

Andrés is honored and humbled to be returning to Profile Theatre with this production, having previously performed in *The Lisbon Traviata* and the staged

reading of *Corpus Christi* and *Fifth of July*. He has spent the last seven years in Arizona as an associate artist at Childsplay, performing, directing, and teaching. He was part of two National tours with the organization. Other credits include two seasons with the Oregon Shakespeare Festival and seven productions with Artists Repertory Theatre. Andrés has received awards for his directing and acting both in Arizona and in Portland.



### GILBERTO MARTIN DEL CAMPO [VIEJO]

Gilberto is a graduate of the Portland Actors Conservatory and has been involved in the Portland theater scene for the past five years. Credits

include productions with Miracle Theatre, NW Classical Theatre Company, Artists Repertory Theatre, the Portland Actors Conservatory, and most recently salon productions for Cerimon House where he adapted, directed, and co-produced *Lee, Adam & Sam* based on John Steinbeck's *East of Eden*. He co-wrote and directed the play *That Was The River, This Is the Sea* with Claire Willett, a staged reading produced in the 2010 Fertile Ground Festival, and participated in the successful inaugural production of Badass Theatre Co., *Invasion!*. Film and television projects include "Not Dead Yet," "Management," "Duende: The suit of Lights," and "Leverage." Gilberto works as a court certified interpreter and has a AA in culinary arts.



### MICHAEL MENDELSON [HENRY]

Michael is thrilled to return to Profile Theatre where past productions include *Burn This, Klonsky and Schwartz, The Lisbon*

*Traviata*, and *The Heidi Chronicles*. As a Resident Artist at Artists Rep he's been seen in *Mistakes Were Made, Ten Chimneys, Red Herring, Sherlock Holmes and the Case of the Christmas Carol, God of Carnage, The Cherry Orchard, Superior Donuts, Three Sisters, Holidazed, Design for Living, Becky's New Car, Eurydice, Mr. Marmalade, Present Laughter, and Love!Valour!Compassion!*. New York, Regional, and local theatres include Clark Studio Theatre at Lincoln Center, Ensemble Studio Theatre, Theatre 1010, Revolving Shakespeare Company, The Genesis Guild, HRC Showcase Theatre, Arkansas Rep., Utah, Berkeley, Wisconsin Shakespeare Festivals, St. Michael's and Paper Mill Playhouse, Penobscot Theatre Company, PCPA Theatre Festival, The Bathhouse Theatre, Alice B. and A Contemporary Theatre, First Stage Milwaukie, Next Act Theatre, Portland Center Stage, Oregon Shakespeare Festival-Portland, Northwest Classical, Miracle Theatre, and others. Michael is also the Artistic Director of Portland Shakespeare Project, a teacher, private coach and a member of Actor's Equity Association.



### CRYSTAL ANN MUÑOZ [CONSUELA]

Crystal is happy to be joining Profile Theatre as part of their Sam Shepard season. A proud founding member of the Anon It Moves theatre company

and a 2013 Drammy winner (Matilde in *The Clean House*, Lunacy Stageworks), Crystal has appeared locally with Portland Playhouse, Jewish Theatre Collaborative, Milagro Theatre, Portland Shakespeare Project,



triangle productions!, Post5 Theatre Co, Salt and Sage Productions, and FUSE Theatre Ensemble. Regional credits include Marin Shakespeare Company, Idaho Repertory Theatre, and Moscow Art Theatre (Too).



### **EDNA F. VAZQUEZ [EJEKATL]**

Edna is a singer/songwriter and poet who spent the first 16 years of her life in the state of Jalisco, world-renowned as the soul of Mexican mariachi music. At 17 she traveled

to the U.S. to start a career in the music business and found herself singing and playing music across the country, achieving national exposure by singing on television shows like "Tengo Talento, Mucho Talento" and "Sábado Gigante Internacional con Don Francisco," where she won first prize with her rendition of *Cucurrucucú Paloma*. Edna is passionate about bringing the traditional touch and feeling of Mexico's traditional Folklorico to audiences. With that, she mixes in her own compositions which are sprinkled with a variety of all Latin American genres. She alternates her traditional music with original Latin rock songs in English and Spanish. She recently graduated from college with a major in education, and is publishing her first book of poems.

### **MIKHAEL TARA GARVER [DIRECTOR]**

Mikhael has worked as a director and educator at the Atlantic Theater, American Repertory Theater, American Conservatory Theater, The Kitchen, Harvard University, Bard University, New York University, The Goodman Theatre, The Public Theater, Yale University, and Steppenwolf Theater Company. She was the artistic director for *Sleep No More* and the Artistic Director of Chicago Storefront *Uma Productions*, Emerging Artist for the National Theater of Scotland, and an Artistic Associate of SITI Company. Directing credits include *The Water Play* (The Playwrights Center/Goodman Theater); *Much Ado About Nothing*, and *Cloud 9* (Atlantic Theater); *Fornicated From the Beatles*

(Emerging America Festival at American Repertory Theater); *Gloryana* (World premiere workshop; The Public Theater, York Theater). Northwestern University BSSP; Columbia University MFA.; She is also the Managing Artistic Director of Woodshed Collective. Upcoming: *Aggressive, Depressive, Party & Mom*. [www.mikhaeltaragarver.com](http://www.mikhaeltaragarver.com)

### **SETH REISER [SCENIC DESIGN]**

Seth is very happy to be part of this season at Profile. While in Portland, Seth is designing the lighting for Portland Center Stage's production of *Chinglish*. Recent NYC credits include *Come and Back Again* with David Dorfman Dance at BAM and now touring, *The Bad Guys* at Second Stage, *The Agony and the Ecstasy of Steve Jobs* at The Public Theatre, the Obie Award winning production of *The Lily's Revenge* at HERE Arts, *Dutch A/V* at La MaMa, Reggie Watts and Tommy Smith's *RADIO PLAY* at PS 122. Seth has also worked with The New Ensemble, The Coney Island Museum, The Human Animals Collective, among others. Regionally his work has been seen at: Trinity Repertory, Actors Theatre of Louisville, Berkeley Repertory, Seattle Repertory, The Eugene O'Neill Theatre Center, Woolly Mammoth, American Repertory Theatre, and Playmakers Repertory. Seth received his MFA from NYU/Tisch. He lives in Rochester, NY with his wife Mary and daughter Marion. [www.sethreiserdesign.com](http://www.sethreiserdesign.com)

### **JESSICA BOBILLOT [COSTUME DESIGN]**

Jessica is delighted to be returning to Profile Theatre. She has a BSA from PSU in painting and printmaking and a second BSA in apparel design. Designs for Profile include *Fifth of July*, *"Master Harold"...and the Boys*, *The Road to Mecca*, and *Blood Knot*. For Artists Repertory Theatre, designs include *The Lieutenant of Inishmore*, *No Man's Land*, *Seven Guitars*, and *Xmas Unplugged*. For Portland Shakespeare Project, she designed for *As You Like It*, *King Lear* and *The Taming of the Shrew*. At the Portland Actors Conservatory, she is the resident costume designer and

## BIOGRAPHIES CONTINUED

productions include *A Bright Room Called Day* and *Twelfth Night*. Jessica has worked at the Portland Opera for several seasons, and has been the assistant costume designer on *La Calisto* and *L'Enfant et les Sortilèges*. Her dresses have been seen in Martha Stewart Weddings and have won awards at The Red Dress Benefit Gala. She's a faculty member in the apparel design department at the Art Institute of Portland.

### CARL FABER [LIGHTING DESIGN]

Recent: *The Tenant* (Woodshed Collective, NYC), *Trouble in Mind* (Arena Stage, Dir: Irene Lewis), *Wilderness* (Berlin, Chor: Tommy Noonan), *Balm in Gilead* (Industry City Brooklyn, Dir: Beau Willimon, Alex Harvey, Brian Mertes), *Brother Brother* (Theater Freiburg). Associate Lighting/Video Director: Bon Iver & The National. Resident Installation Lighting Designer & Technical Supervisor: Woodshed Collective. Guest Lecturer & Designer: Crossroads School, Santa Monica, CA. Lighting Supervisor: Williamstown Theatre Festival ('08 & '09, Artistic Director: Nicholas Martin). Broadway Assistant Designer: *The Book of Mormon*, *Bloody Bloody Andrew Jackson*, *August: Osage County*, *Present Laughter*, *9 to 5: The Musical*, *Dividing the Estate*. Notable Collaborations: AMC, Blue Man Group, Obscura Digital, Boston Institute of Contemporary Art, IBM, Shanghai Centre Theatre, Non-Stop Wroclaw, Empire Entertainment, Barneys New York, Stanton Collaborative. Member: United Scenic Artists Local 829. Education: Catlin Gabel, Vassar College. [www.carlfaber.com](http://www.carlfaber.com)

### SHARATH PATEL [SOUND DESIGN]

Portland credits include *The Road to Mecca*, *Blood Knot*, *My Children! My Africa!* (Profile Theatre), *The Brother/Sister Plays*, *Bloody, Bloody Andrew Jackson*, *Angels in America*, *King Hedley II*, *The Scene*, *The Huntsmen* (Portland Playhouse), *Oedipus el Rey* (Miracle Theatre), *Anything But Brilliant* (Lights Up!), *Hard Times* (CoHo), *Macbeth* (Bag&Baggage), *13: A New Musical* (Staged!), *Kiss Me Like You*

*Mean It* (Third Rail Repertory), *Lion in Winter*, *King John* (Northwest Classical), *Neverwhere* (Northwest Academy), *Feral* (Compass Works), *True West* (Our Shoes are Red), *A Servant of Two Masters* (PSU), *Conference of the Birds* (Willamette University), *Pulp Diction 2012* (The Brody). New York and International credits include designs at The Westside Theater, La MaMa, Playwrights Horizons, Theatre Row, PS 122, Here Arts Center, Berkshires, New York Stage and Film, The Tank, Classic Stage, Fordham, Columbia, Yale Rep, Yale Dramat. Sharath holds a BFA from Ohio University and he earned his MFA in Sound Design from the Yale School of Drama. *Binding* at PS122 won the 2010 Innovative Theatre Award for Outstanding Performance Art Production in New York City.

### SARA LUDEMAN [PROPERTIES DESIGN]

First time prop designer, Sara is excited to be returning to Profile Theatre for her second season with the company. Sara started last year as a costume design intern working under designer Jessica Bobillot. In addition to her work at Profile, she has assisted on productions for Artist Repertory Theatre, Actors Conservatory, and The Portland State Opera. She designed costumes for *Once on This Island* by Enlightened Theatrics in Salem Oregon. Sara also assists Profile with their Portland Public School outreach program, helping to educate the next generation of theatre employees. She graduated in 2012 from Portland State University with a BA in history and a minor in theater. Profile has helped her to further her passion for theater by opening doors to various areas of production where she continues to grow and expand her knowledge base.

### D WESTERHOLM [STAGE MANAGER]

D most recently worked at Oregon Shakespeare Festival as a non-equity Assistant Stage Manager: *The Unfortunates* (2013), *A Midsummer Night's Dream* (2013), *Troilus and Cressida* (2012), *The Very Merry Wives of Windsor, Iowa* (2012), *Julius Caesar*

(2011), *The African Company Presents Richard III* (2011), and *American Night* (FAIR Apprentice, 2010). Additional credits: *The Road to Mecca* (Stage Manager, Profile Theatre, dir. Adriana Baer); *Break of Noon* (Production Assistant, MCC Theatre, dir. Jo Bonney). *Romeo and Juliet* and *A Streetcar Named Desire* (Stage Manager, Columbia Stages, dir. Adriana Baer); *Black Snow* (Stage Manager, Columbia Stages, dir. Mikhael Tara Garver). BA in Theatre Management from Western Washington University, MFA in Stage Management from Columbia University.

## **BRENT J. SULLIVAN**

### **[PRODUCTION MANAGER/TECHNICAL DIRECTOR]**

Brent has over 10 years of experience as a theatre professional. He specializes in production management and lighting design. Brent holds an MFA from Boston University and recently relocated to Portland from Boston. While in New England, he was the production supervisor for the Harvard Dance program, an independent lighting designer for regional dance and theatre companies, as well as an instructor at local area universities. Brent is currently the Technical Director for Artists Repertory Theatre and the Production Manager/Technical Director at Profile Theatre.

## **MICHELLE JAZUK**

### **[ASSISTANT PRODUCTION MANAGER]**

Michelle has been a proud member of the Portland Theatre community for over eight years. In that time she has had the pleasure of collaborating with a variety of companies and talented individuals including, but not limited to: Artists Repertory Theatre, Third Rail Repertory, Portland Center Stage, Oregon Ballet Theatre, Theatre Vertigo, Broadway Rose, and STAGED! She has also worked with companies in Salem and Cincinnati. Michelle has worn many hats over the years, but continues the majority of her work as an AEA Stage Manager. Her previous work with Profile includes Assistant Director on *Blood Knot*.

## **BAILEY ANNE MAXWELL**

### **[PRODUCTION APPRENTICE]**

Bailey is a 2012 graduate of Linfield College, and has very much enjoyed her first year working in the Portland theatre community. She is delighted to be starting her first season with Profile Theatre. Recent credits include: *Lend Me a Tenor*, Chekhov's *The Bear* and *The Proposal*, and *Dead Man's Cell Phone* (Linfield); *Seven Guitars*, *The Lost Boy*, *Ten Chimneys*, and *Foxfinder* (Artists Repertory Theatre); and *Taming of The Shrew* and *The Tamer Tamed* (Portland Shakespeare Project). She is a proud member of the EMC program.

## **PROFILE THEATRE WAS FOUNDED IN 1997. EACH SEASON, PROFILE THEATRE EXPLORES THE VISION AND PERSPECTIVE OF A SINGLE PLAYWRIGHT.**

### **STAFF**

Adriana Baer, Artistic Director  
Matthew Jones, Managing Director  
Lauren Bloom Hanover, Director of Education  
and Community Engagement  
Melissa Bockwinkel, Business Manager  
Brent Sullivan, Production Manager/  
Technical Director  
Aaron Schwartzbord, Marketing Consultant  
D Westerholm, Box Office Manager

### **BOARD OF DIRECTORS**

Steve Young, Chair	Stephen Guntli
Richard Bradspies	Mayer Schwartz
Paul Duden	Mary Simeone
Erika George	Melissa Stewart

### **RESOURCE COUNCIL**

Gwyneth Gamble Booth	Jane Unger, Founding Artistic Director
Lue Douthit	Julie Vigeland
Leslie Johnson	Priscilla Bernard
Mike Lindberg	Wieden
Patrick Stupek	
George Thorn	

**WEB [PROFILETHEATRE.ORG](http://PROFILETHEATRE.ORG)**

**PHONE 503.242.0080**

**EMAIL [INFO@PROFILETHEATRE.ORG](mailto:INFO@PROFILETHEATRE.ORG)**

# THANK YOU TO OUR GENEROUS DONORS

## EXECUTIVE PRODUCERS \$10,000 AND ABOVE

Anonymous  
The Collins Foundation  
Francie and Paul Duden  
Fred W. Fields Fund of the Oregon Community Foundation  
The Kinsman Foundation  
Ronni Lacroute Meyer Memorial Trust  
Oregon Cultural Trust  
The Regional Arts and Culture Council, including support from the City of Portland and Multnomah County  
The Shubert Foundation

## PRODUCERS \$5,000 - \$9,999

The Herbert A. Templeton Foundation  
The Jackson Foundation  
Aline Brosh McKenna PGE Foundation  
Rose E. Tucker Charitable Trust  
Work for Art, including contributions from more than 60 companies and 1,600 employees in the region  
Wells Fargo

## ASSOCIATE PRODUCERS \$2,500 - \$4,999

Leotta Gordon Foundation  
Mayer and Janet Schwartz Fund of the Oregon Community Foundation  
National Endowment for the Arts  
Oregon Arts Commission

Mary Simeone  
Patrick Stupek+  
Charlie and Darci Swindells

## PRODUCING PARTNERS \$1,000 - \$2,499

Michael Bloom and Audrey Zavell  
Richard Bradspies  
Dramatists Guild Fund  
Rich and Erika George+  
Susan Hoffman  
Virginia Hubbell  
Leslie Johnson  
Leslie Labbe  
Susan and Leonard Magazine  
Multnomah County Cultural Coalition  
Norma Reich  
Mary Rosenberg  
Mayer and Janet Schwartz  
Kathi Simeone Sedel  
Susan and John Spring  
Kathleen and Leigh Stephenson-Kuhn  
The Wyss Foundation  
Steve Young and Jane Fellows  
Mayer and Janet Schwartz

## PARTNERS \$500 - \$999

Barbara Bolles  
Lynn Campbell  
Vince and Valri Chiappetta  
Robert and Janet Conklin  
Christy Eugenis  
Robert and Melissa Good  
Richard Hay  
Edward and Elaine Kemp  
Mary McGlone and Ian Underwood  
Patricia Raley  
Judy Rice  
Robert D. Geddes  
Rick and Halle Sadle  
Kathi Simeone Sedel  
Rosalie and Ed Tank

Barbara West and JT Taylor  
Ben and Elaine Whiteley

## ASSOCIATES \$100 - \$499

Kay Abramowitz  
Tobias Andersen  
Kim and Christine Appleberry  
Kregg Arntson and Todd Fetig  
John Bakum  
Ann Bardacke and David Wolf  
Catherine Bax and Ann Turner  
Sonia Buist  
Colleen Cain and Philip Miller  
Bruce Carroll  
Cheryl A. Chevis+  
John and Joyce Cornyn  
John and Bunny Davis  
Wolfgang Dempke and Alise Rubin  
Eileen DeSandre  
Jess Dishman  
Nancy Drake  
Thomas Dunne and Tricia Azzone  
Jim Durham  
Carol Edelman  
Carmen Egido and Abel Weinrib  
Miriam Feder  
Edith and Williamson Fuller  
David and Martha Gardner  
Maria E. Gonzalez+  
Jeff Gorham  
Bruce and Gwendolyn Graff  
Gretta Grimala  
Stephen Guntli and Chrisse Roccaro  
Missy Hall  
Ulrich Hardt and Karen Johnson  
Judith Henderson  
Mike and Patsy Hester  
Michael Hoeye and Martha Banyas  
Donald and Lynnette Houghton  
Cecily Johns

Alan and Dianne Johnson  
Alan Jones  
Rich and Jean Josephson  
Danielle and Elliott Kalan  
Diane Kamali  
Chris and Beth Karlin  
Barry and Carol Kast  
Keeton Corporation  
Jeffrey and Carol Kilmer  
Alan Koch  
Mark Larson  
Margaret Larson and Richard Lewis  
Bob Lemon  
Lara Lerner  
Ken and Trina Lundgren  
Billie Marx  
Larry Meissner  
Josie Mendoza and Hugh Mackworth  
Miles and Libby Merwin  
Charles Meshul and Maureen Ober  
Casey Mills and Carmen Calzacorta  
Charles and Lee Norris  
Kristine Olson  
Veronica Paracchini  
David C Parker and Annie Popkin  
Jim and Sally Petersen  
Phillip Peterson  
Sandy Polishuk  
Sarah Quinn  
Betty and Jacob Reiss  
Brad Rence  
Judith Rice  
Charles and Judith Rooks  
Kirsten Roth  
Charlotte Rubin  
Rich and Joan Rubin  
Darrell Salk  
Shirley Salzman  
Adam Schwartz  
Ourry and Carolyn Schwartzbord  
Jim Scott  
Peter and Jeanette Scott  
David Sessions

+ Work for Art Participants: These patrons direct their support to Profile Theatre through the Work for Art Program within the Regional Arts & Culture Council.



Bert Shaw and Liana Colombo  
Barbara Kerr Smith  
Melissa Stewart and Don Merkt  
Milan and Jean Stoyanov  
Christine Tanner and Lisa Chickadonz  
George and Edie Taylor  
Marcia Truman  
Margaret van Beuningen  
Barbara Van Raalte  
David and Julie Verburg  
Julie and Ted Vigeland  
Janet F Warrington  
Judy Werner  
Bonnie Werther  
Jonah Weston  
Elizabeth Willis+  
Grey Wolfe and Howard Waskow  
Kathleen Worley  
Alan and Janet Zell  
Karen and Lawrence Zivin

## **DONORS UP TO \$99**

Lindsey Alexander  
Claudia Alick  
Lily Allen-Hughes  
Robert Amesse  
Sherry Archer  
James Arnoux  
Erin Badillo  
Matthew Bailey  
Robert Baker  
Tiffany Baran  
Brenda Bartell  
Thomas Becker and Janice Haaken  
John Behlmann  
Marie Bellavia  
Kaye Blankenship  
Naomi and Ron Bloom  
David and JoAnne Bodin  
Erwin Boge  
Janet Bonafede  
Josephine Brassey  
Thom Bray  
Katie Bretsch  
Kaliswa Brewster  
Nita Brueggeman  
Sandra Bryson  
David Buttaro  
Graeme Byrd

Elliot Cahn  
Joanne Cali  
Philip Callen  
Ellen Cantwell  
Priscilla Carlson  
Helen and Jean Carryl  
Jean and Richard Cauthorn  
Siobhan Caverly  
Carol and Sy Chestler  
Amy Claussen  
Amanda Coffey  
Rick Comandich  
Clarence Coo  
Matthew Corwin  
Susan Cowan  
Kristeen Crosser  
Foss Curtis  
Rebecca Davis  
Ted de Chatelet  
Chantal Degroat  
Sarah DeLong  
Megan Densmore  
Chad Deverman  
Julie Diamond  
Stephen Dobay  
Nancy Dobbs Owen  
Donald and Deanne Doorlag  
Ryan Durham  
Karen Easter  
Lois Eaton  
William Evans  
Christine Farrington  
Gilbert Feliciano and Brianna Clevenger  
Barbara Felsinger  
Carol Ferris  
Betsy Fippinger  
Robert Fisher  
Brooke Fletcher and Mario Calcagno  
Teresa J Frakes  
Laura Frizzell  
Marty Fromer  
Dawn-Lyen Gardner  
Barbara Garrett  
Mikhael Garver  
Carolyn Gassaway  
Jason Glick  
Katherine Gosnell  
Janet Goulston  
Tony Greiner  
Michael Griggs  
Christina Gullion  
Lauren Gunderson  
Roger and Lola Ann Hallin  
Brett Hamilton  
Tommy Harrington

Julie Hastings and Oren Kosansky  
Dot Hearn  
David Heath  
Calvin Hennig  
Helen Herner  
Sarah Hirshan  
Jonathan Horvath  
Alicia House  
Elizabeth Huffman  
Alexis Jacknow  
Paul Jacobs  
Steven and Geri Jacobs  
Susan Johnson  
Paige Jones  
Budd and Rosetta Kass  
Abbey Kletz  
David Kinder  
Ginger Kirby  
Arthur Kirby  
Scott Kirby  
Allison Klein  
Teresa Koberstein  
Susan Korey and Merritt Linn  
Jennifer Lakey  
Nicole Lane  
Margaret Larson and Richard Lewis  
Jenn Lawson  
Jennifer Le Blanc  
Allison Lear  
Gordon Lee and Amie Rose  
Fiona Leeds  
Joan Levy  
Ellen Levy  
Sidne Lewis  
Dawn Lisell  
Eileen Little  
Mikel Lubrano  
Sara Ludeman  
Elisabeth and Peter Lyon  
Garland Lyons  
Ben Marcotte  
Judith Marks  
Ty and Brenda Marshall  
Karla Mason  
Nancy Matthews  
Clara Mayer  
Sara Rea McCauley  
Jane McDonough  
Judy McKeever  
Kathryn McLaughlin  
Anne McLaughlin  
Wendy McLennan  
Michael Mendelson

Bill & Nancy Meyer  
Dana Millican  
Susan Mosedale  
Stephanie Mulligan  
Tom Myhre & Kristin Simeone-Myhre  
Barbara Nolan  
Sharon Norman  
Gary Norman  
Clare O'Sheeran  
Laura Obayashi  
Karen Paladino  
Michelle Paul  
Sue Pickgrobe  
Jess Prichard  
Amy Prosser  
Karen Rathje  
Virginia Reed  
Kristie Reeves  
Nancy Rilling  
Mona Roach  
Mary Roberts  
Mary Rodgers  
Elizabeth Romanski  
Charles & Miriam Rosenthal  
Amanda Rinzel  
William and Susan Sack  
Salt and Sage Productions  
Tessa Saltzman  
Monica Santana  
Curtis Schade & Jacquie Siewert-Schade  
Deborah Schaufler  
Devani Scheidler and James Kearney  
Donna Schreiner  
Laurie Schroeder  
Edward and Lorna Schwanke  
Alan Schwanke  
Jeremy Schwartzbord  
Aaron Schwartzbord and Michael Weinstein  
Luisa M Sermol  
JP & Monica Setziol-Phillips  
Howard and Alice Shapiro  
Beppie Shapiro  
Susan Shay  
Isabel Sheridan  
Lynne Shlom-Ferguson  
Korey & Bethany Simeone

---

Ray Simmons  
Tom Slot  
Larry Smith  
Amanda Soden  
Olivia A. Solomon  
Antonio Sonera  
Tamara Sorelli  
Tim Stapleton  
Scott Stephens  
Elizabeth Stoessel  
Stephen and Alice Stolzberg  
Judy Stoner  
Sharon Streeter  
Larry Teitelbaum  
Gail Tennant  
Peter Thacker & Lynn Taylor  
Theri Humes & Matthew Jones  
Nancy Tolin  
Kristen Tompeck  
Toni Tringolo  
Lyle Tucker  
Ethan Turner  
Mark Twohy  
Jane Vogel  
Paul Walsh  
Matt Walsh  
Ginger Walter

Suzan Wapnick  
Steve Wasserman  
Katie Watkins  
Ellen Weeks  
Mike White  
Claire Willett  
Susan Willis  
Carol Ann Wohlmut  
Jason Wong  
Susannah Woods  
Byron Yankou  
Kevin Yell

### THE JANE UNGER HANDS ON THEATRE! LEGACY FUND

Created in honor of founding Artistic Director Jane Unger, gifts to this fund help to sustain our Hands on Theatre! Program, bringing theatre education into classrooms throughout our community.

Elisabeth and Peter Lyon  
Marion Poliakoff  
Beverly Unger  
Sally Unger  
Tom and Linda Unger



This list acknowledges gifts received between January 1, 2013 – December 11, 2013. Profile Theatre regrets any errors or omissions. Please contact the development department at 503.242.0080 with any corrections or questions.

## GREAT ART BEGINS WITH YOU

As a 501(c)(3) not-for-profit organization, Profile Theatre greatly relies on your generosity. To learn how you can support our programs and the work on stage, visit [profiletheatre.org](http://profiletheatre.org) or call 503.242.0080.

---

## CONNECT WITH US!

 Share your experiences and tag them #myprofile

PROFILETHEATRE



@PROFILETHEATRE

JOIN OUR EMAIL LIST | VISIT [PROFILETHEATRE.ORG](http://PROFILETHEATRE.ORG) AND SIGN-UP TO RECEIVE NEWS, SPECIAL OFFERS, AND INFORMATION ABOUT OUR PRODUCTIONS DIRECTLY TO YOUR INBOX.

# IN DIALOGUE SERIES

In Dialogue is our series of lectures, pre-show talks, post-show discussions, concerts and other supplemental programming that explore our featured writer's world. For more information visit [Profiletheatre.org/in-dialogue](http://Profiletheatre.org/in-dialogue).

All events are free and open to the public unless otherwise noted.

## Events and Programs throughout *Eyes For Consuela*

**SATURDAY, JANUARY 18TH:** Opening Night reception following the performance

**SUNDAY, JANUARY 19TH:** Post-performance Mat Chat with director Mikhael Tara Garver

**THURSDAY, JANUARY 23RD:** Dinner Dialogue (additional tickets required)

**FRIDAY, JANUARY 24TH:** Purchase an authentic taste of Mexico in our lobby before the performance by La Bonita Restaurant

**SATURDAY, JANUARY 25TH:** Panel discussion in partnership with Fusionarte, a local radio station and arts organization, about the traditional depiction of Mexico and Mexicans by Caucasian American writers. 6:30pm in our lobby.

**SUNDAY, JANUARY 26TH:** Post-performance Mat Chat with cast members

**THURSDAY, JANUARY 30TH:** Reading of short pieces inspired by Sam Shepard and his writing by participants of our Hands On Theatre residency program at Metropolitan Learning Center High School. 6:45pm in the lobby.

**FRIDAY, JANUARY 31ST** (pre-performance): Discussion about the nature of violence in the work of Sam Shepard with actor and fight choreographer Ty Hewitt. 6:45 in our lobby.

**FRIDAY, JANUARY 31ST** (post-performance): Late night: Join Profile's team to explore the words of Shepard through a hands-on visual art activity – with wine!

**SATURDAY, FEBRUARY 1ST:** Local musician Joaquin Lopez performs intimate ballads inspired by Mexican folklore and the Latin American bolero with Antonio Centurion on Paraguayan harp. 6:45pm in our lobby.

## In Dialogue Readings throughout our season

### *Hungry*

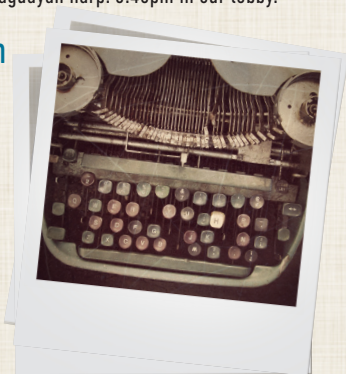
by Amy Claussen, directed by Adriana Baer  
March 15, 2014 at 7:30 PM & March 16, 2014 at 2:00 PM

### *Buena Vista*

by Edith Freni, directed by Desdemona Chiang  
April 12, 2014 at 7:30 PM & April 13, 2014 at 2:00 PM

### *A Lie of the Mind*

by Sam Shepard, directed by Megan Ward  
with members of Third Rail Repertory Theatre's acting ensemble  
July 12, 2014 at 7:30 PM & July 13, 2014 at 2:00 PM



Profile Theatre is committed to providing our audiences with opportunities to engage with our featured writer in unique and varied ways. With the expansion of our In Dialogue programming, we hope to extend the event of a Profile production beyond the bounds of what is onstage, bringing the community together for an exciting, provocative and inspiring experience.



THE HOTTEST TICKET OF THE SPRING SEASON!

AUGUST WILSON—  
A UNIQUE, POWERFUL FORCE IN AMERICAN THEATER

# AUGUST WILSON

• MONOLOGUE COMPETITION •

PORTLAND FINALS at the NEWMARK THEATRE  
**MARCH 3, 2014 | 7:00 to 8:30P.M.**

Celebrate local high school students as they  
bring Wilson's memorable characters to life.

3 FINALISTS WILL PERFORM  
ON BROADWAY, BRINGING  
NATIONAL RECOGNITION TO  
PORTLAND'S THEATER SCENE.



THE AUGUST WILSON  
**Red Door Project**  
[www.reddoorproject.org](http://www.reddoorproject.org)



MARK SPENCER  
HOTEL

Portland's Hotel to the Arts

Stay Like a Local.  
Eat Like a Local.  
Live Like a Local.

Located where The West End  
meets The Pearl District

409 SW 11th Avenue  
Portland, Oregon 97205

[markspencer.com](http://markspencer.com)  
**1-800-548-3934**